

AMS NEWSLETTER

THE AMERICAN MUSICOLOGICAL SOCIETY

CONSTITUENT MEMBER OF THE AMERICAN COUNCIL OF LEARNED SOCIETIES

VOLUME XIV, NUMBER II

AUGUST, 1984

Philadelphia Meeting

The University of Pennsylvania will host the fiftieth Annual Meeting of the Society at the Franklin Plaza Hotel, Philadelphia, from Thursday, October 25 through Sunday, October 28. The program, assembled by a committee chaired by Anne Dhu Shapiro in twenty-six sessions of great interest and diversity (two of them will be shared sessions with the Society for Music Theory), includes topical sessions (e.g., 19th-century opera; Notre Dame polyphony; Symbolism in Renaissance music; Terminology in 18th-century Criticism), sessions dealing with broad historical periods, and several sessions devoted to particular composers (Berlioz, Liszt and Wagner; Haydn and Beethoven; and, with SMT, a session devoted exclusively to Wagner).

Ten concerts have been planned by Philip Brett's Program Committee. Noontime offerings include harpsichordist Robert Hill playing suites by J. S. Bach; a lecture recital by Ellen Harris and Philip Gossett (voice and piano) featuring settings by Rossini of a Metastasio text; a lecture recital presenting Janáček folksongs by Michael Beckerman and Mary Henderson (voice and piano); the University of Pennsylvania Collegium Musicum (Mary Anne Ballard, director) in motets of Josquin, Willaert and others; and a piano recital by Roy Howat of newly discovered pieces by Debussy (discovered and edited by Mr. Howat himself). Evening concerts will include three programs of early music on authentic instruments. On Thursday, the Philadelphia Baroque Orchestra with guest artist Kim Heindel (harpsichordist) and Julianne Baird (soprano) will perform works of J. S. Bach: the Second Suite for Orchestra, the "Wedding" Cantata, and the Fifth Brandenburg Concerto. On the same evening the Classical Quartet will play quartets by Haydn and Mozart. The Baltimore Consort, artists-in-residence at the Walters Gallery, will play a program of

English and Scottish music for broken consort on Friday—it will feature works of Thomas Morley and Matthew Holmes.

On Saturday evening the University of Pennsylvania will sponsor a concert of particular significance. In honor of Professor-Emeritus Otto E. Albrecht, on the attainment of his 85th birthday, the Concerto Soloists of Philadelphia (Marc Mostovoy, director) will play works by Mozart and J. S. Bach. The conductor for the occasion will be an old friend of Otto's, Max Rudolf, the conductor-laureate of the Concerto Soloists, and the concert will feature the brilliant young Australian pianist, Kathryn Selby, in Mozart's Piano Concerto in G, K.453.

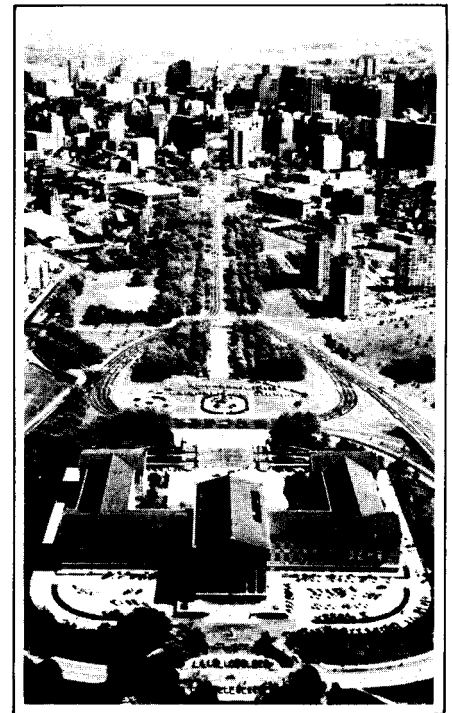
All the paper sessions and day-time concerts will be held at the Franklin Plaza Hotel, a first-class facility offering every amenity to its guests. Situated just off the Benjamin Franklin Parkway near Logan Circle, it is within easy reach of Philadelphia's historic and cultural attractions. Almost next door is the Free Library, which boasts one of the most important American music collections, while the wonderful Rodin Museum and the Philadelphia Museum of Art are a short distance along the Parkway. Independence Hall and the surrounding historical area (including Society Hill, an area of beautifully restored 18th-century housing) can be reached quickly and easily by public transport or taxi. Other places of interest to members, such as the Library Company of Philadelphia, the Historical Society of Pennsylvania, the Rosenbach Museum, are also nearby. Information and directions will be included in the registration packages. For medievalists there will be a tour of the Glen Cairn Museum at Bryn Athyn. This museum's Pitcairn Collection (stained glass, sculpture, and manuscripts) was considered the world's richest medieval collection still in private hands before it was recently opened to the public.

Elsewhere in this mailing members will find information on some important practical matters. These include some cheaper accommodations for students, arrangements for child care, and a service

to find roommates in the hotel for those who want to avoid the fairly high single-room rate at the Franklin Plaza.

Transport to Philadelphia by road or train is easy. Those coming by air should note the following. Eastern Airlines has a special toll free number (1-800-327-1295; from Florida, 1-800-432-1217) for reservations offering a 30% discount on their own flights. They will arrange travel from any city. Travel Headquarters, the Illinois agency which handled flight arrangements to Louisville last year, will also arrange discounted travel. Their number is 1-800-323-9128. In using these services you must specify that you are traveling to the AMS meeting (when calling Eastern, refer to Easy Access Number EZ10P68).

—Thomas H. Connolly



The Franklin Plaza is just to the left of the Cathedral of Sts. Peter and Paul (with cupola) in the upper center.

President's Message

"Let us resolve now to be at the meeting in order to absorb wisdom, encourage speakers and exchange views," urged Secretary Edward N. Waters in the *American Musicological Society's Newsletter* of June, 1947, adding, "Even if you are a musicologist, you will find a little sociability and a companionable drink or two." Apart from its suggestion that musicologists by nature shrink from contact with other human beings, Secretary Waters's notice bears another touch that, judged from today's perspective, seems quaint: its hope that attendance at the forthcoming Annual Meeting in Boston would not be as "disappointing" as at Princeton the previous winter, when only a handful of the faithful showed up. Those who have been Society members in recent years have different memories. Our Annual Meetings have turned into four-day bazaars, mixing scholarly interchange, concert-going, sight-seeing, job-hunting, colleague-hunting, meals with friends old and new, general base-touching, and whatever level of wheeling and dealing we scholars can manage. Attending an Annual Meeting now is a bit like swimming in a heavy sea. One bobs one's way through hotel lobbies, through the roiling hordes at the no-host cocktail party, through the maze of presentations chosen by the Program Committee, treading people and papers, here and there finding one to hang on to.

We now take for granted the extent and force of this musicological extravaganza—enough so that perhaps we feel free to criticize its ungainliness and bustle and its tendency to exhaust us by de-

livering more of a good thing than we want in one dose. In the beginning, however, the Society was too small to meet successfully on its own. It depended instead on large organizations like the Music Teacher's National Association to provide a framework within which musicological sessions could be organized. Although small, the Society in its early days was more polymathic than paltry. Its active members pursued a wide range of scholarly fields in music, including in their ranks historians, theorists, ethnomusicologists, even a few composers. AMS papers were assumed to be addressed to all members, and no simultaneous sessions were held. Simply to read the names of the Society's first set of officers (1935) is to evoke a bygone age of heroes, for they include the Babe Ruths and Ty Cobbs of American musicology: President Otto Kinkeldey, Vice-Presidents Charles Seeger and Oliver Strunk, Secretary Gustave Reese, and Treasurer Paul Henry Lang.

The American Musicological Society is an organization very different from the one founded half a century ago. It is surely larger than its founders dreamed. It is more a collection of specialists than of generalists. Membership, originally open only by approval of other members, may now be achieved by anyone who pays the dues. While only modestly endowed financially, the Society is rich in human resources. Thanks to bequests from some members and a willingness of others to donate their time and energy, it manages to promote and to publish musical scholarship on a regular basis. That the AMS has carved out a niche in American musical life is a signal, too, that mu-

sicology has found a home in academic circles. Scholarly careers in the field are in effect supported by universities: employing scholars to teach, they also expect them to conduct research and to publish their discoveries. Thus, the AMS depends upon and benefits from a strong, widespread impulse in America to study music seriously. By providing a forum within which the results of musical scholarship can be presented—orally at Annual and Chapter Meetings, in print in the *Journal* and other AMS publications—the Society both helps to focus research and to foster more. If not an originating force, it serves as a public space, visited regularly by members of the profession, without which scholarly communication would be infinitely more troublesome.

This forum, into which meetings, publications, and exchanges of evidence and interpretation are incorporated, is perhaps the Society's founders' chief legacy to us. In Philadelphia, we shall pause late Friday afternoon, October 26, to celebrate the founders' achievements and their spirit, and to honor the contributions of some of our distinguished colleagues: the Society's Honorary and Corresponding Members and its Past Presidents. While providing an occasion to review the past, however, the 50th Anniversary meeting will also mark an important step into the future: the launching of the Society's drive to raise an endowment for student scholarships in musicology. Thus, both homage to older and encouragement to newer members, both memory and fresh resolution, intersect in our 50th Anniversary celebration, which is as it should be in a vital scholarly society.

—Richard Crawford

AMS 50

There is no better way to celebrate the past than by planning for the future. On the occasion of its fiftieth anniversary, the American Musicological Society is undertaking a major fund-raising effort. Its goal: the establishment by June, 1987 of an endowment of \$500,000, income from which will support five annual fellowships to assist student members of the Society during the year in which they are completing their dissertations.

The Board of Directors has approved action taken so far, which includes the submission of a proposal to the National Endowment for the Humanities for a Challenge Grant to be matched by the AMS on a 3:1 basis, and the appointment of a Committee to plan and co-ordinate the campaign. Contributions will be sought from corporations, foundations, performing artists and others, but it is from the mem-

bership itself that the longest enthusiasm and financial support must come. The Board is presently drafting guidelines for the Fellowship competition and considering the most equitable way to administer it.

AMS 50, as the three-year Capital Campaign is to be known, will be formally launched at the Philadelphia meeting. Members of the Society who would like more information before October, or who would like to share their ideas and volunteer their efforts, should contact one of the following: Margaret Bent, President-Elect, Dept. of Music, Princeton University, Princeton, NJ 08544; Alvin H. Johnson, Treasurer and Executive Director, Dept. of Music, University of Pennsylvania, Philadelphia, PA 19104; or Philip Gossett, Chairman of the Campaign Committee, Dept. of Music, The University of Chicago, Chicago, IL 60637.

Survey of Computer Uses

The Board of the Society has asked me to gather information concerning computer-related activities of the Society's members. I therefore invite correspondence from members concerning your computer-assisted projects. Briefly mention the types of work you are doing and the hardware and software you use. If you are encoding music, please mention your approach. I will prepare for the Board's consideration at its October meeting an overview of your responses. The Board will want to know what kinds of activities a future committee on computing might undertake, and it would like to have a list of individuals who are currently active in the field. Correspondence may be sent to me at the School of Music, University of Michigan, Ann Arbor, MI 48109.

—David Crawford

Vancouver—1985

In 1985 the American Musicological Society will hold its Annual Meeting in Vancouver, British Columbia. Co-hosted by the University of British Columbia and the University of Victoria, the meeting will take place at the Hotel Vancouver from Thursday afternoon, November 14, to Sunday noon, November 17. We shall be meeting together with the College Music Society, the Society for Ethnomusicology, and the Society for Music Theory.

The Program Committee invites the submission of abstracts for papers and proposals for sessions on the usual array of musicological topics. Given the number and diversity of the societies meeting simultaneously, the Committee would also hope to receive proposals for sessions or papers that might be especially appealing to the diverse constituencies that will be represented. Finally, the Committee solicits proposals for displays and informal reports on research in progress, which will be accommodated insofar as space and time allow.

Abstracts and proposals to be considered for the Annual Meeting should be submitted to: Charles M. Atkinson, Program Committee Chairman, School of Music, The Ohio State University, Columbus, OH 43210. Deadline for submission is February 1, 1985.

Abstracts of individual papers should be typed, double-spaced, on one side of 8¹/₂ by 11-inch bond paper. They should be written so that they may be incorporated directly into the published Abstracts of Papers. The title should appear at the top of the page, with the author and institutional affiliation at the foot. For less formal study sessions and panels, the organizer may submit a general prospectus with summaries of the individual contributions. Proposals for reports on research in progress should describe the format envisioned for the display and report. It should be noted that members may propose formal sessions devoted to a single topic, but that an abstract is required for each contribution and that each will be considered separately. Abstracts that do not conform to the published guidelines will be returned.

For its initial review the Program Committee circulates blind abstracts; that is, the author's name is removed from the copies read by Committee members. Recent Program Committees have been disinclined to schedule two appearances by an author at the same Annual Meeting, or appearances by the same author at two consecutive Annual Meetings.

Proposals for musical performances should be sent to the Chairman of the Performance Committee, Richard Taruskin, Music Department, Columbia University, New York, NY 10027.

AMS Membership Statistics

As of June 14, 1984, the tally of members and subscribers on the rolls of the Society was as follows:

Memberships	
Regular	2,349
Regular spouse	118
Student	728
Student spouse	25
Emeritus	174
Life	19
Sustaining	3
Corresponding	11
Honorary	11
Complimentary	3
	<hr/>
	3,441
Subscriptions	
Institutional	1,204
Individual	24
Complimentary	16
	<hr/>
	1,244
Grand total	4,685
Grand total	
1983	4,683
1982	4,763
1981	4,796
1980	4,809

Air-Mail Delivery of Newsletter

At the request of members living outside Canada and the U. S., the Society wishes to offer air-mail delivery of the *Newsletter* packet in February and August. For those interested, please write to the AMS office at 201 South 34th St., Philadelphia, PA 19104. The charge will be \$5.00 in U. S. currency per year.

The *AMS Newsletter* is published twice each year by the American Musicological Society, Inc., and mailed to all members and subscribers. Changes of address and requests for additional copies of current and back numbers should be mailed to: Alvin H. Johnson, Executive Director, University of Pennsylvania, 201 South 34th Street, Philadelphia, PA 19104. Items for publication in the *Newsletter* should be sent to: Kristine Forney, *AMS Newsletter*, 413 Morgan Creek Dr., Chapel Hill, NC 27514. Copy for the February issue must be submitted before December 1; copy for the August issue must be submitted before June 15.

This *AMS Newsletter* was produced by A-R Editions, Inc., 315 West Gorham Street, Madison, WI 53703.

AMS President-Elect Margaret Bent

At the annual meeting in Philadelphia Margaret Bent will become the new President of the AMS. She studied with Thurston Dart at Cambridge University, where she completed the doctorate in 1969 with a dissertation on the Old Hall Manuscript. After teaching at London University, she came to the U. S. in 1975 as a Professor, first at Brandeis University and then at Princeton University from 1981. She served on the AMS Board of Directors in 1979 and 1980, and was awarded the Dent Medal in 1979 and a John Simon Guggenheim Fellowship in 1983.

Articles in various musicological periodicals reflect her primary concerns with the sources, theory and practice of late-medieval polyphony, and include studies of notation, manuscript transmission and *musica ficta*. She has published a monograph on John Dunstaple and has been active as an editor of English fifteenth-century music, Ciconia and Rossini.



AMS President-Elect Margaret Bent

